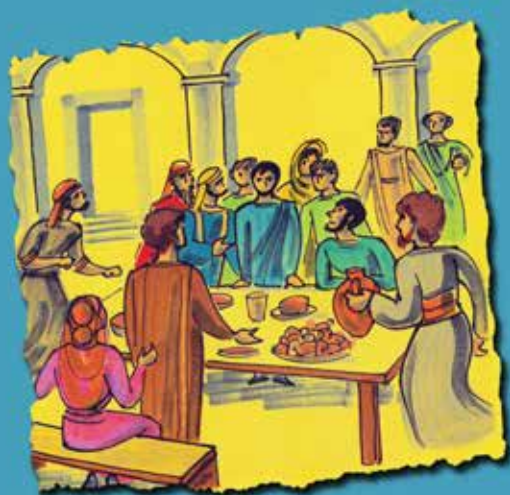




Bivhili Yanga ya U ita na U guda Bugu ya 3



www.biblesociety.co.za
bible society of south africa

U guda u
vhala na u wala!
Mbekanyamushumo ya **Litheresi**

Bivhili Yanga ya U ita na U guda Bugu ya 3

Tshivenda Literacy Programme
First digital edition 2020

© Bible Society of South Africa 2020

Illustrations © Bible Society of South Africa 1985
Illustrations by Annie Vallotton

All rights reserved. No part of this book may, without prior written permission of the copyright holder, be reproduced or transmitted in any form or by any means, electronic, mechanical or otherwise, either through photocopying, writing, audio recording, or any other system for information storage and retrieval.

Published by the Bible Society of South Africa
P O Box 5500, Tyger Valley 7536, Bellville

www.biblesociety.co.za

Epub-format ISBN 978-0-7982-2408-6
PDF-format ISBN 978-0-7982-2407-9



bible society
of south africa





U bebwa ha Yesu

Josefa na Maria vho takuwa
muḁini wa Nazaretha
vha livha muḁini wa Betlehema.



Afho Betlehema,
Maria a beba riwana.

A mu putela
nga mbemba dza sila
a mu ladza mukungwani.

Musi vha tshi swika Betlehema,
ho vha hu si na kamara yavho
ine vha nga dzula khayo
nduni ya vhaeni.





Vhañwe vhalisa
vho vha vha tshi lala dakani.

Vho vha vha tshi khou
lisa nngu dzavho.



Muruñwa wa Muñe
washu a bvelela kha
vhalisa.

Lupenyo lwa Muñe
washu lwa vha tiba.
Vha tshenuwa
zwihulu.

Muruṅwa a vha vhudza a ri,
“Ni songo ofha!
Ndo ni ḁisela mafhungo maḁifha.



Ḃamusi ḁino
Yesu o bebwa Betlehema.
Ndi ene Muṅe washu.

Ni ḁo wana lutshetshe
Iwo putelwa nga mbemba dza sila,
Iwo lala mukungwani.”

Thendo nga i ye ha Mudzimu!

Thendo nga i ye ha Mudzimu!



Kathihi fhedzi ha vhoneala mara a
vharuŋwa vha tshi bva ɬadulu,
vha tshi khou imba vha tshi ri,

“Thendo nga i ye ha
Mudzimu ɬadulu-ɬadulu,
na fhanu shangoni vhane a vha
takalela vha vhe na mulalo.”

Vharuṅwa vha vhuēlela liṭadulu.



Ndi hone vhalisa
vha tshi vhudzana vha ri,
“Nga ri ye Betlehema,
ri yo vhona hetsho tsho iteaho.”

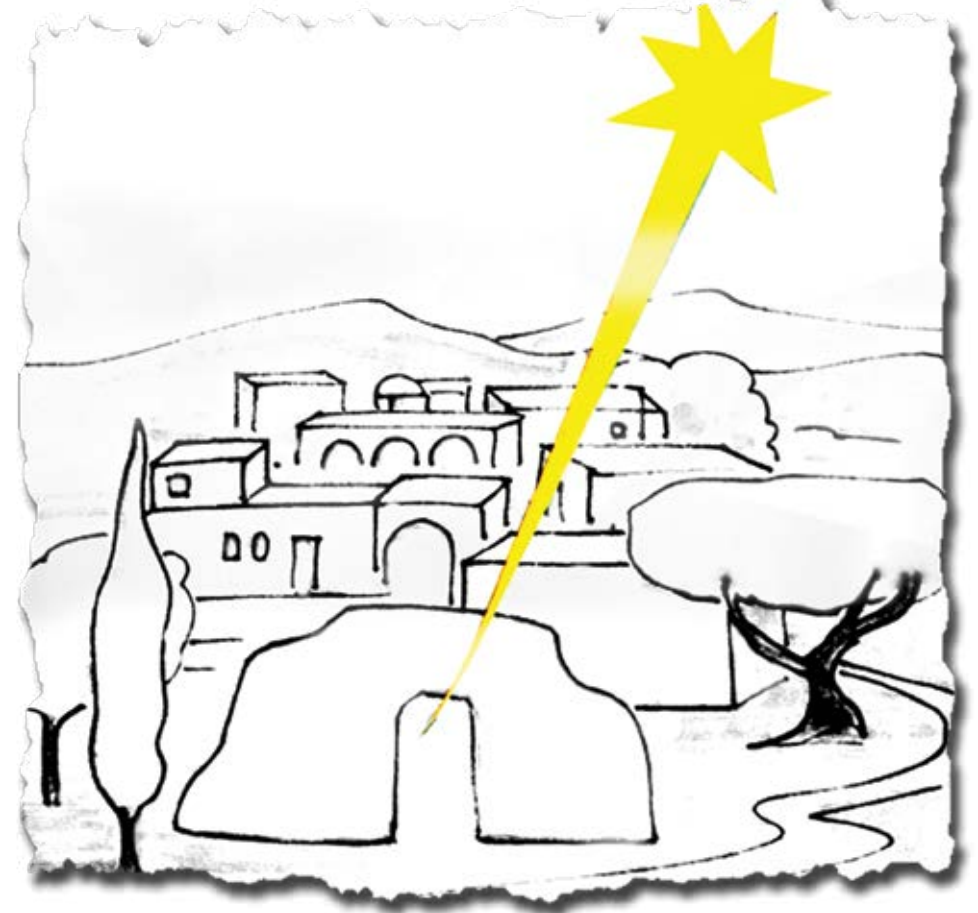
Ndi hone

vha tshi tuwa nga luvhilo,
vha wana Maria na Josefa,
vha vhona riwana
o lala mukungwani.



Ha da vhaṅwe vhaṭali
u ṭoda Yesu.

Vho tshimbila lwendo lulapfu
vha tshi bva Vhubvaḍuvha.
Ṇaledzi ya vha farisa u wana
he Yesu a vha e hone.



Ṇaledzi ya ranga phanda
ha vhanna vha vhuṭali
u swika i tshi ima nṭha ha fhethu
he ṅwana a vha e hone.
Musi avho vhanna vha tshi vhona
iyo ṅaledzi, vha takala hani!



Vhanna vha vhuṭali
vha dzhena nduni.
Musi vha tshi vhona ṛwana
e na Maria mme awe,
vha gwadama vha mu luvha.

Ndi hone vha tshi bvisa
 zwifhiwa zwavho zwa n'wana.
 Ho vha hu na musuku na zwioro
 na zwiḁolo zwi nukhelelaho.



^a_b Maipfi Marithwa

Lavhelesani zwifanyiso zwi re afha fhasi ni
 dzudzanye maipfi are tsini nazwo.



n r a u m w u

u



i d a e l n z

a



e u y s

s

2
3

Giridi ya Nomboro

Dzhenisani Nomboro dzi siho kha zwidanga.

1	+	1	=	<input type="text"/>
+		+		+
2	+	3	=	<input type="text"/>
=		=		=
<input type="text"/>	+	<input type="text"/>	=	<input type="text"/>

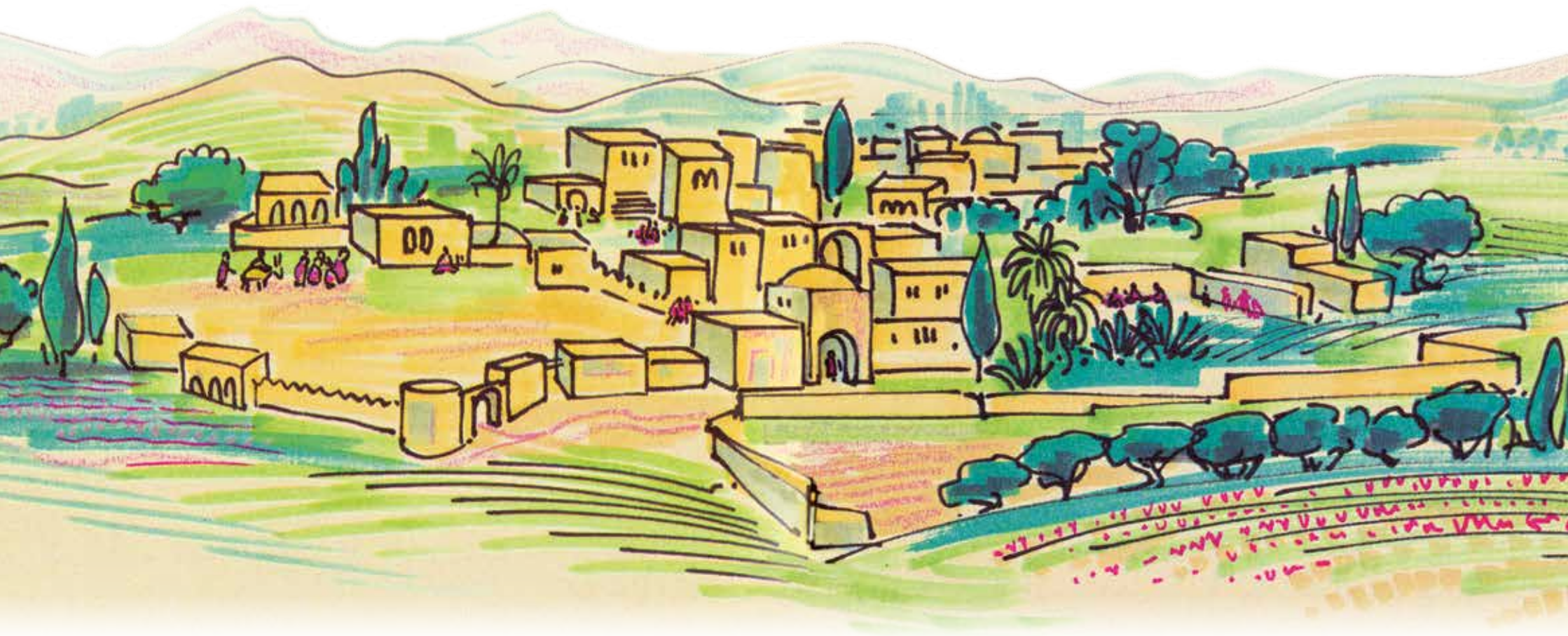
$$3 - 1 = \text{}$$

$$2 - \text{} = 0$$

$$\text{} + 2 = 6$$



Yesu e munyanyani wa mbingano



Mudini wa Kana ho vha hu na
munyanya wa mbingano
na mme a Yesu vho vha vhe
henefho.

Yesu na vhafunziwa vhawe
na vhone vho vha vho vhidziwa.



Hone waini ya tshela.

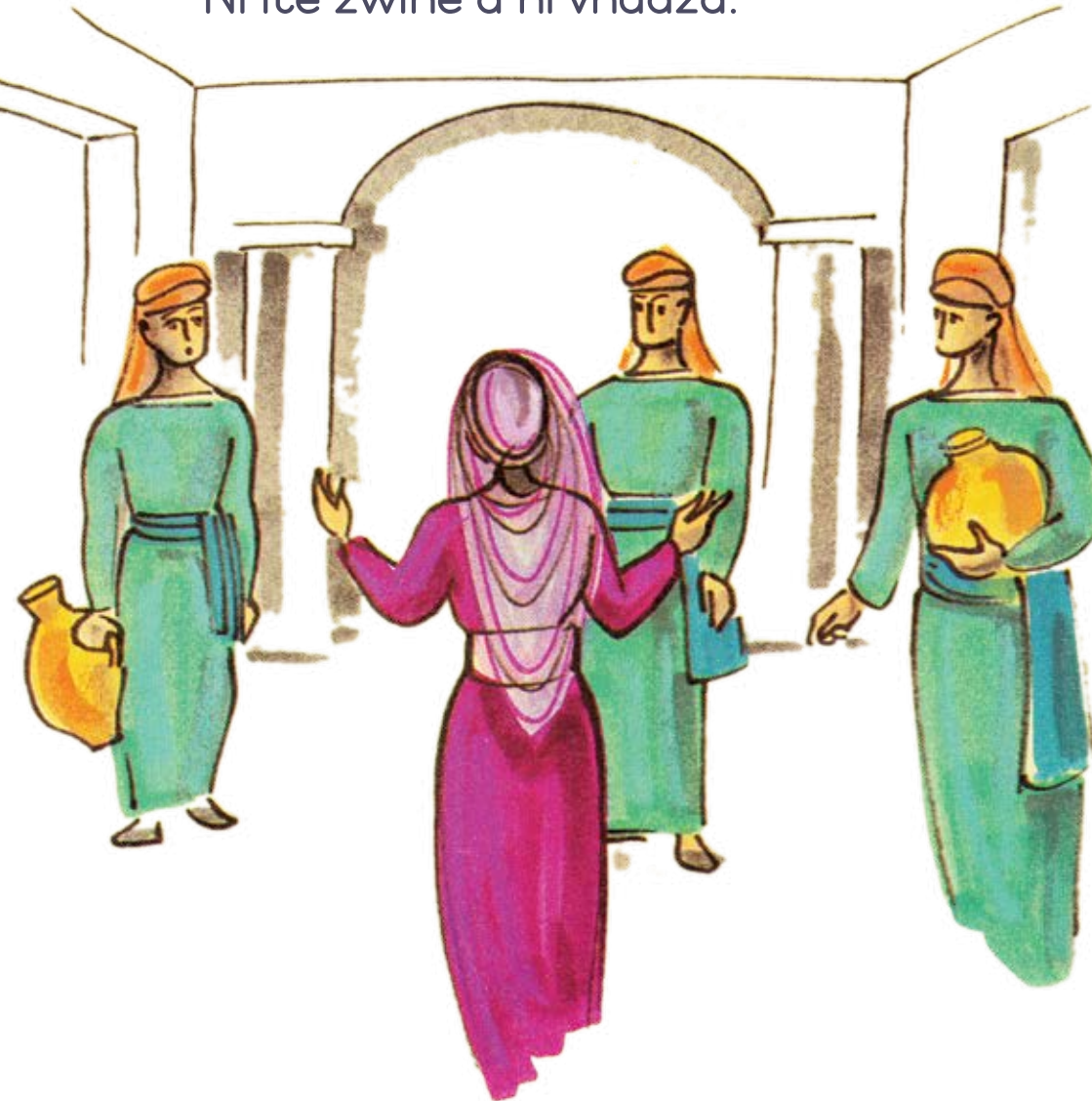


Mme a Yesu vha mu vhudza vha ri,
“Vhathu a vha tshee na waini.”

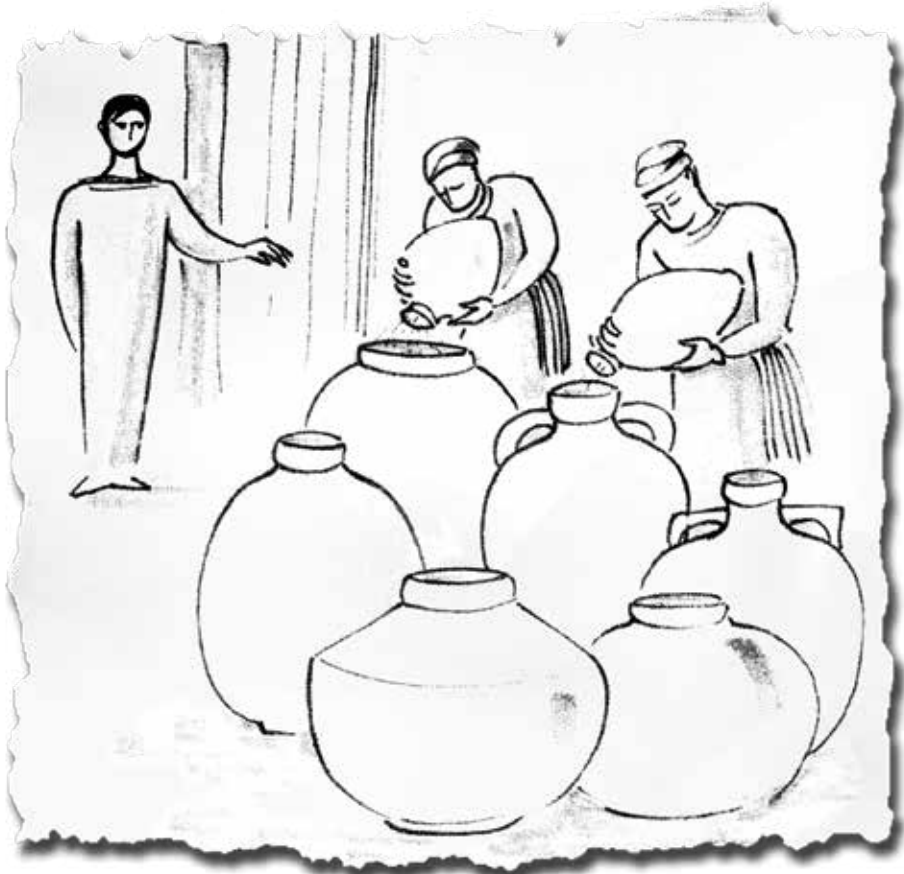
Hone Yesu a vhudza mme awe
a ri,
“Vha mmbudzelani
zwine nda fanela u ita?
Tshifhinga tshanga
a tshi athu swika.”



Mme awe vha vhudza vhashumi
vha ri,
“Ni ite zwine a ni vhudza.”



Ho vha hu na mvuvhelo
dza matombo ɰhanu na nthihi.



Yesu a vhudza vhashumi a ri,
“Dadzani mvuvhelo hedzi
nga maḍi.”
Vha dzi ḍadza
dza guma nga mulomo.

Yesu a vhudza vhashumi a ri,
“Zwino ikani inwe waini,
ni ise ha munna
ane a tshimbidza munyanya.”



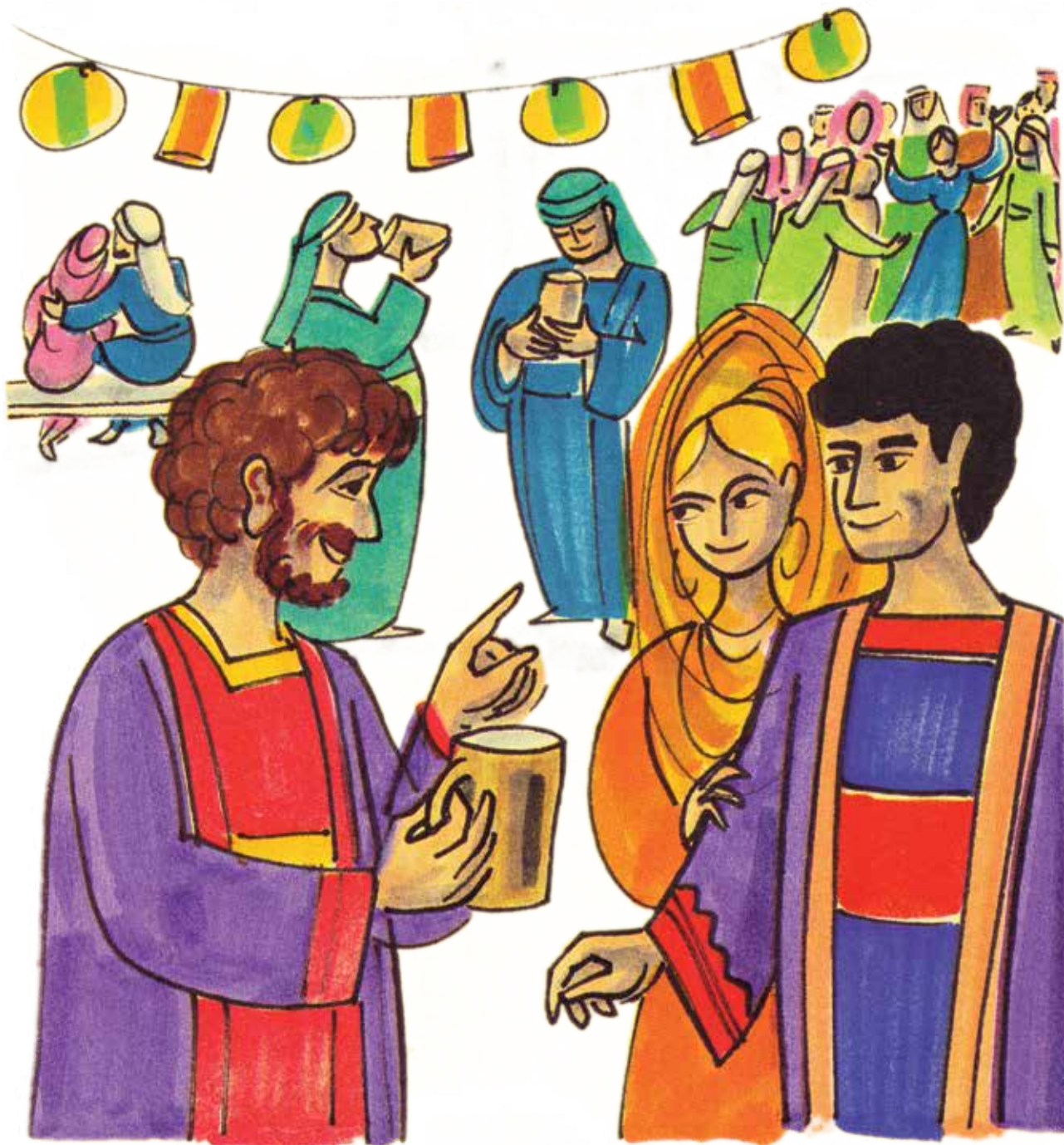
Munna a no tshimbidza
munyanya
a thetshela ayo maḽi
o shandukaho waini.



Munna a no tshimbidza
munyanya
o vha a sa divhi hune iyo waini
ya bva hone.

Ndi hone a tshi vhidza mukwasha
a mu vhudza a ri,
“Muñwe na muñwe
u thoma nga u kela
waini yavhuḽi.

Hone inwi no vhulunga
waini yavhuḽi
u swika zwino.”

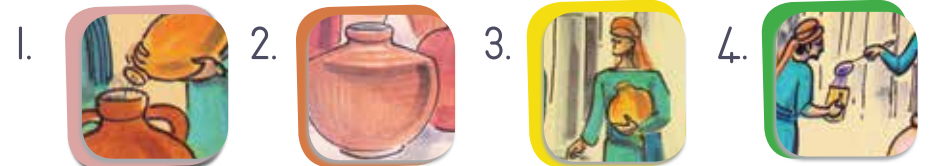
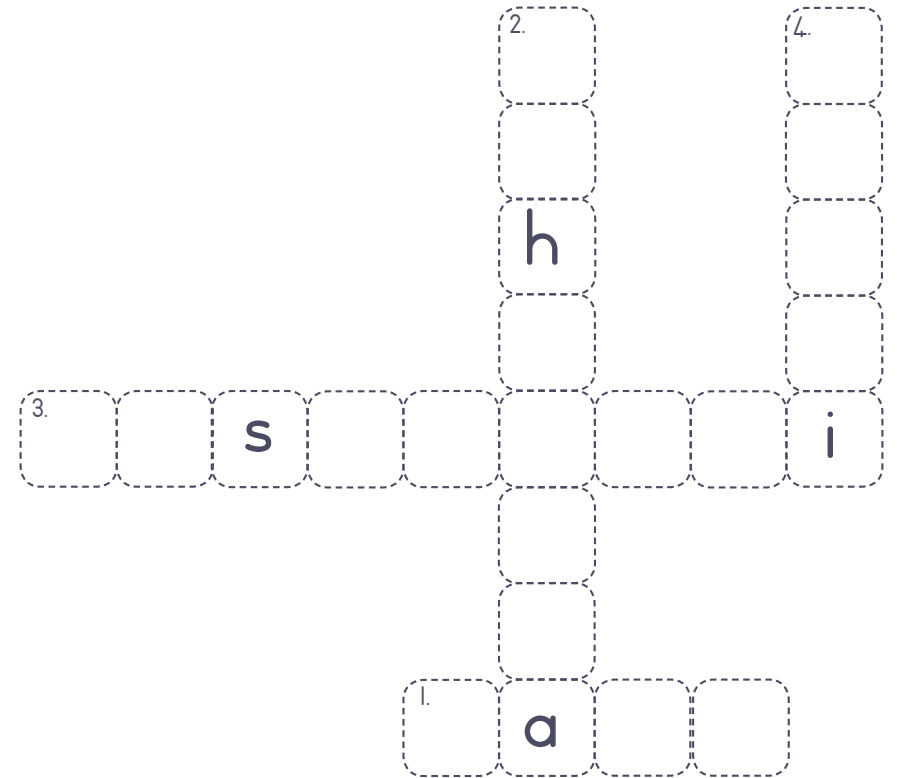


Yesu o ita madembe ayo a u thoma
muḁini wa Kana.

U bva zwenezwo vhafunziwa vhawe
vha mu fulufhela.



a **b** Khanganyisa ya khakhisa maipfi
Fhedzisanani khakhisa maipfi nga u livhanyisa
tshifanyiso tsha nomboro inwe na inwe.



²³ Mutambo wa Ndi ngoho

kana A si ngoho

Raithisani arali tshitatamennde tshinwe na tshinwe tshi re afha fhasi tshi ngoho kana tshi si ngoho.

$2 > 3$

ndi ngoho

a si ngoho

$4 < 7$

ndi ngoho

a si ngoho

$5 > 1$

ndi ngoho

a si ngoho

$6 < 8$

ndi ngoho

a si ngoho

$10 = 5 + 5$

ndi ngoho

a si ngoho

$1 + 2 > 4$

ndi ngoho

a si ngoho

$6 + 2 = 4 + 4$

ndi ngoho

a si ngoho

$3 - 0 = 3$

ndi ngoho

a si ngoho

$4 + 3 < 6$

ndi ngoho

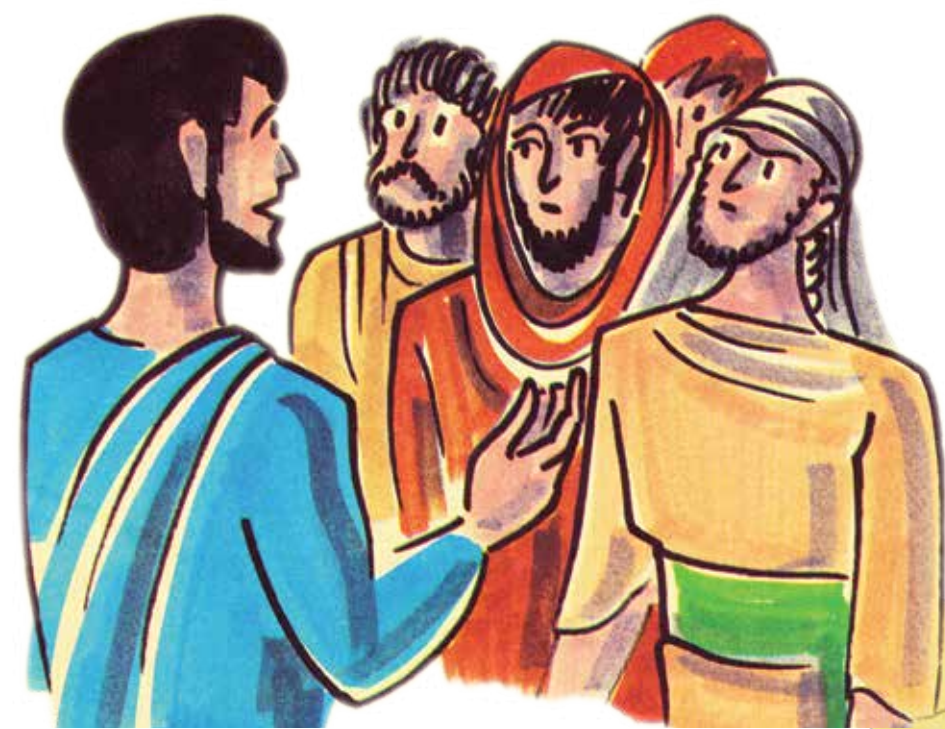
a si ngoho



Musamaria wa mbilutshilidzi

Munwe musi

Yesu o vha a tshi khou
amba na vhathu.



Muñwe munna o vhuya
a fara lwendo
a tshi khou tshimbila
gondoni.

Muñwe munna a mu vhudzisa
a ri,
“Wa hashu ndi nnyi?”

Ndi hone Yesu a tshi vhudza
vhathu tshifanyiso.



Ha ða mavemu
a mu levhela.



Vha mu kherulela zwiambaro,
vha mu rwa.

Vha ṭoḡou vhulaha uyo munna,
vha mu ṭutshela
o rambalala henefho.





Ha fhira tshifhe a tshi khou tsa
nga gondo lene!o.

Musi tshifhe a tshi vhona uyo munna,
a pambutshela thungo a fhira.



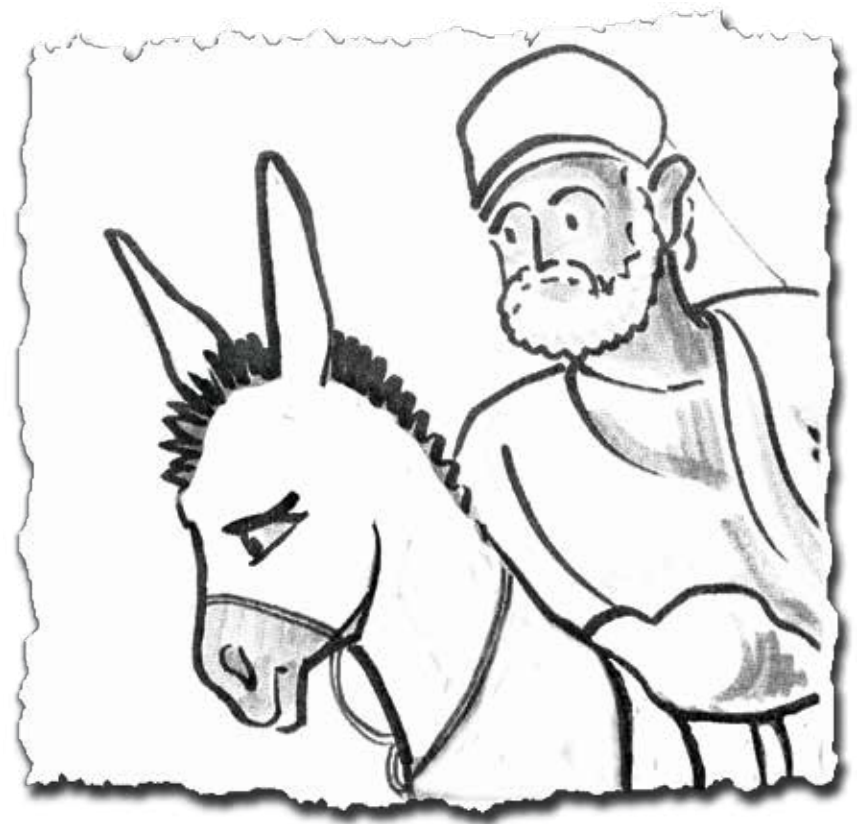
Ngauralo, ha swika
munna
we a vha e mufarisi
thembeleni.



A sendela a sedza uyo
munna,
a pambutshela thungo
a fhira.



Huno muñwe munna
we a vha a tshi bva
shangoni la Samaria
o vha a tshi khou tshimbila
nga gondo lenelo.



Musi a tshi vhona uyo munna
we a vha o rwiwa nga mavemu,
a mu khathutshela mbilu,
a sendela khae.



A shela mbonzhe dzawe
mapfura na waini,
a dzi pomba.

Ndi hone
a tshi namedza uyo munna
kha donngi yawe.





A dzhia uyo munna
a mu isa nduni ya
vhaeni.

A onga uyo munna
henefho nduni ya
vhaeni.



Nga matshelo a bvisa
mangwende mavhili
a siliva.

Ayo mangwende a a
nea muṅe
wa nḽu ya vhaeni a ri,

“Nga vha mu onge.
Musi ndi tshi vhuya
ndi ḽo vha lifhela
zwinwe zwoṽhe
zwe vha mu itela.”

Musi Yesu o no fhedza

u vha vhudza itsho tshifanyiso,
a vhudzisa a ri,

“Muthu uyo o rwiwaho,
munna we a vha a tshi nga vha
wa hawe ndi ufhio?”

Munna uyo a fhindula a ri,

“Ndi we a mu khathutshela mbilu.”

Ndi hone Yesu a tshi ri,

“Ni fanela u ita nga u ralo.”



^a_b Wanani maipfi

Wanani maipfi are kha mutevhe na ipfi lithihi
lo dzumbiwaho.

- thuso
- musamaria
- mangwende
- zwiambaro
- mavemu
- bada
- mufunzi
- donng

e	m	u	s	a	m	a	r	i	a	a
z	n	g	w	m	u	d	u	m	o	r
w	a	v	e	m	e	n	b	b	t	o
i	d	o	n	n	g	i	a	a	h	z
a	m	a	v	n	d	e	d	m	u	w
m	u	f	u	n	z	i	a	e	s	i
b	w	u	n	g	i	u	s	y	o	a
a	i	s	i	d	m	u	s	e	a	f
r	e	n	u	n	z	i	a	s	r	a
o	r	i	m	a	v	e	m	u	o	w
m	a	m	a	n	g	w	e	n	d	e

2 3 Muandisi wo Vanganaho

Fhindulani mbudziso inwe na inwe ya miandiso ire afha fhasi.

$1 \times 2 =$

2

$2 \times 3 =$

$3 \times 1 =$

$2 \times 4 =$

$5 \times 2 =$

$3 \times 3 =$

$2 \times 6 =$

$3 \times 4 =$



Yesu a tshi
kaidza dumbu



Yesu a dzhena tshikepeni.

Vhafunziwa vhawe na vhone
vho vha vhe tshikepeni.

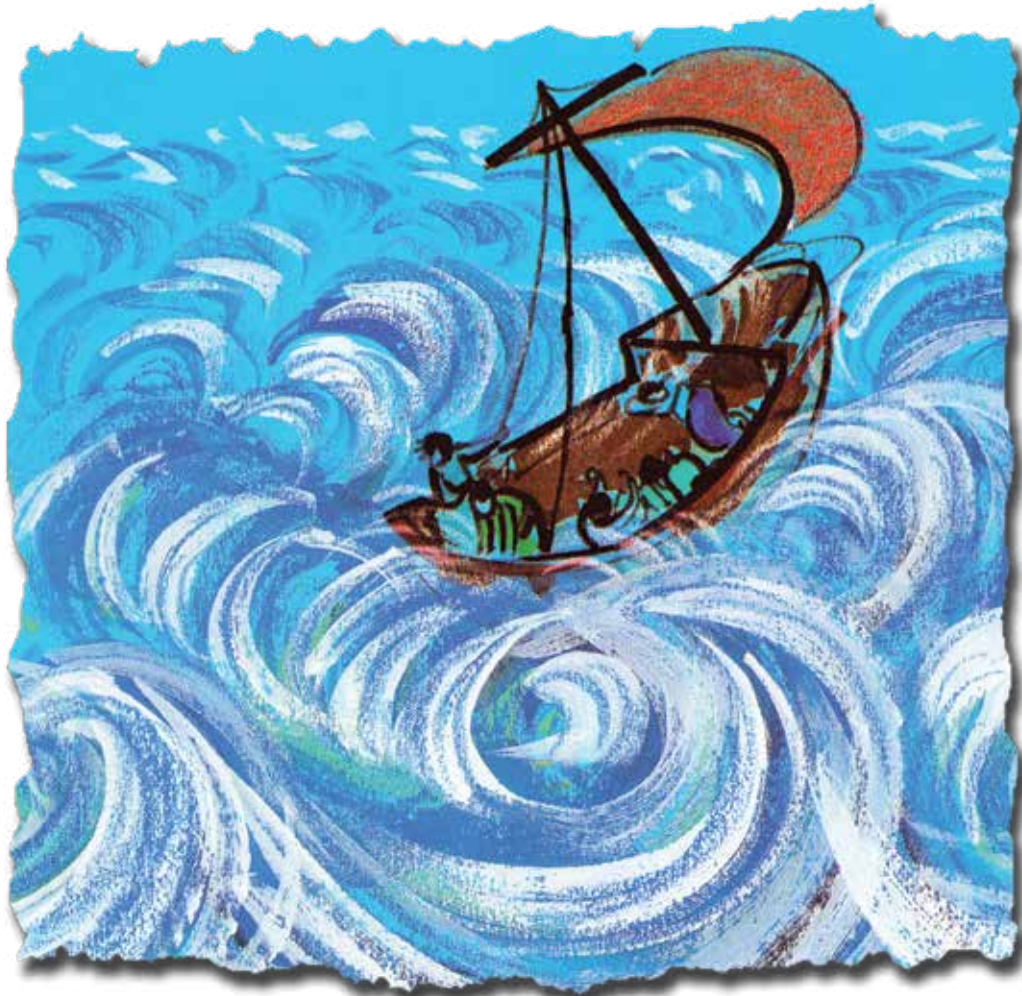
Vha wetshela
seli na luḽa lwa dzivha.





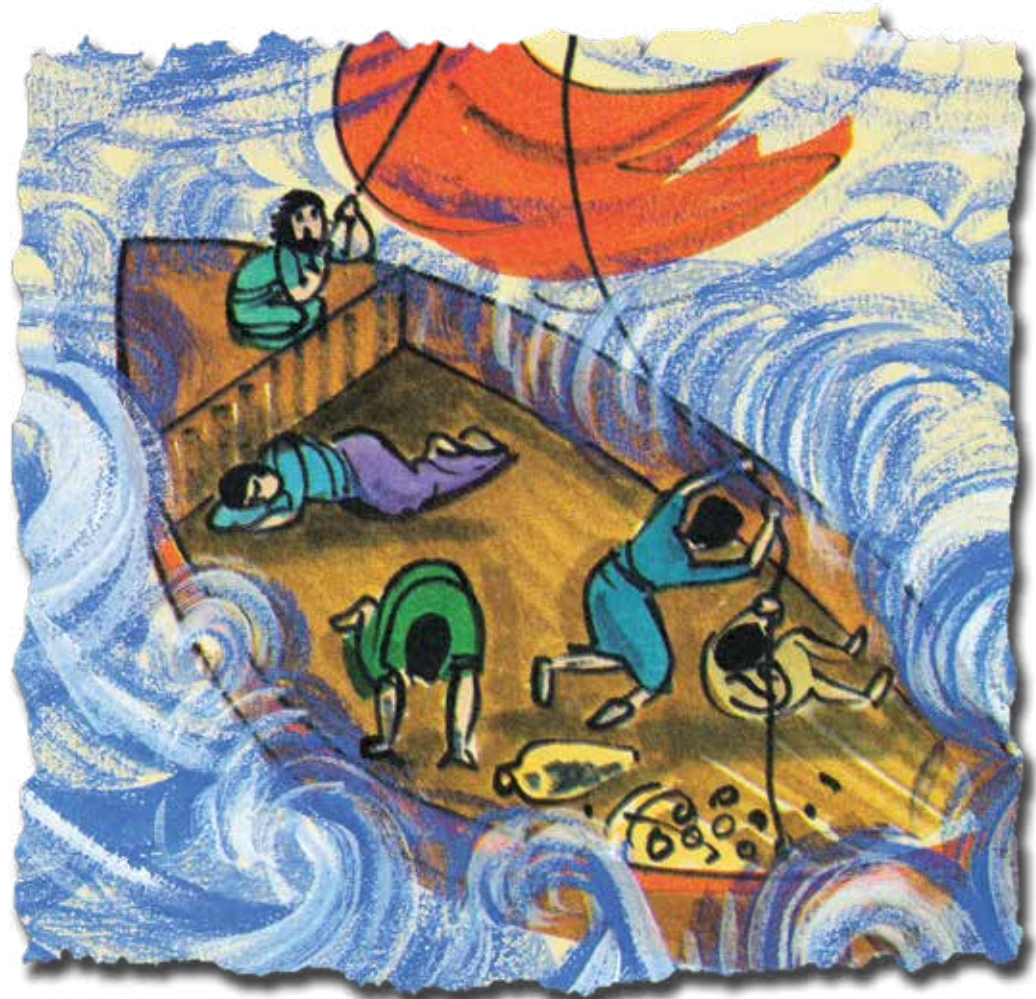
Yesu o vha o edela
murahu ha tshikepe.

Kathihi fhedzi ha thoma u tita
dumbu la maanda.



Magabelo a thoma u dzhena
tshikepeni,
tshikepe tsha vho ṭoda u ṇupela.

Huno Yesu
o vha a tshee o edela.

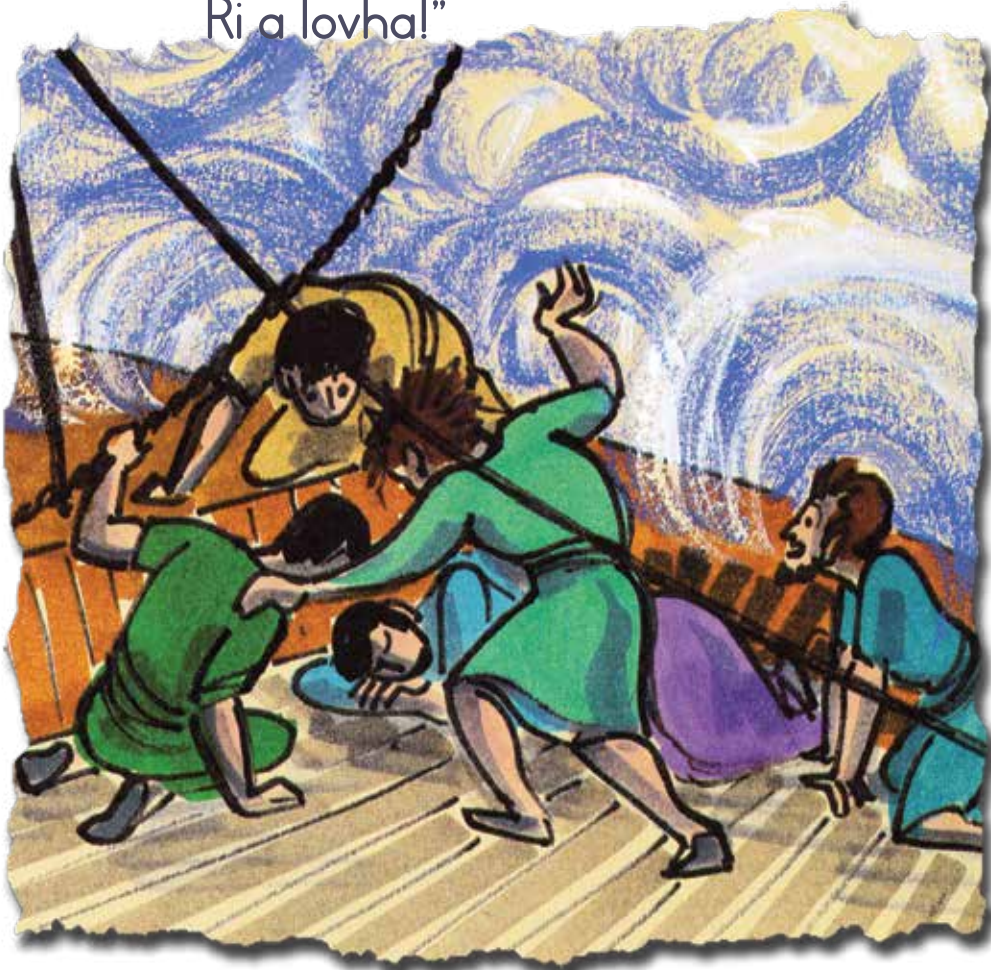


Vhafunziwa vha ya ha Yesu
vha mu vusa.

Vha ri,

“Muṅe washu,
nga vha ri tshidze!

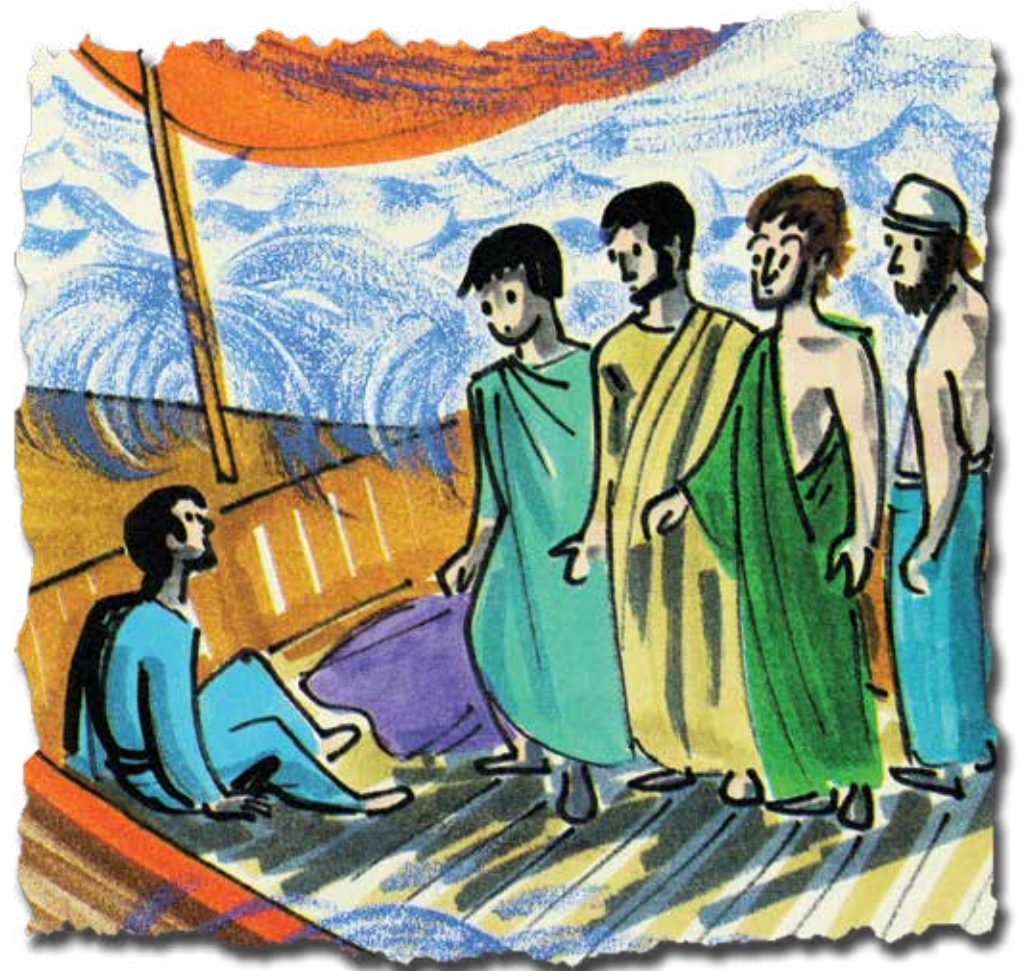
Ri a lovha!”



Yesu a ri,

“Ndi ngani ni tshi ofha?”

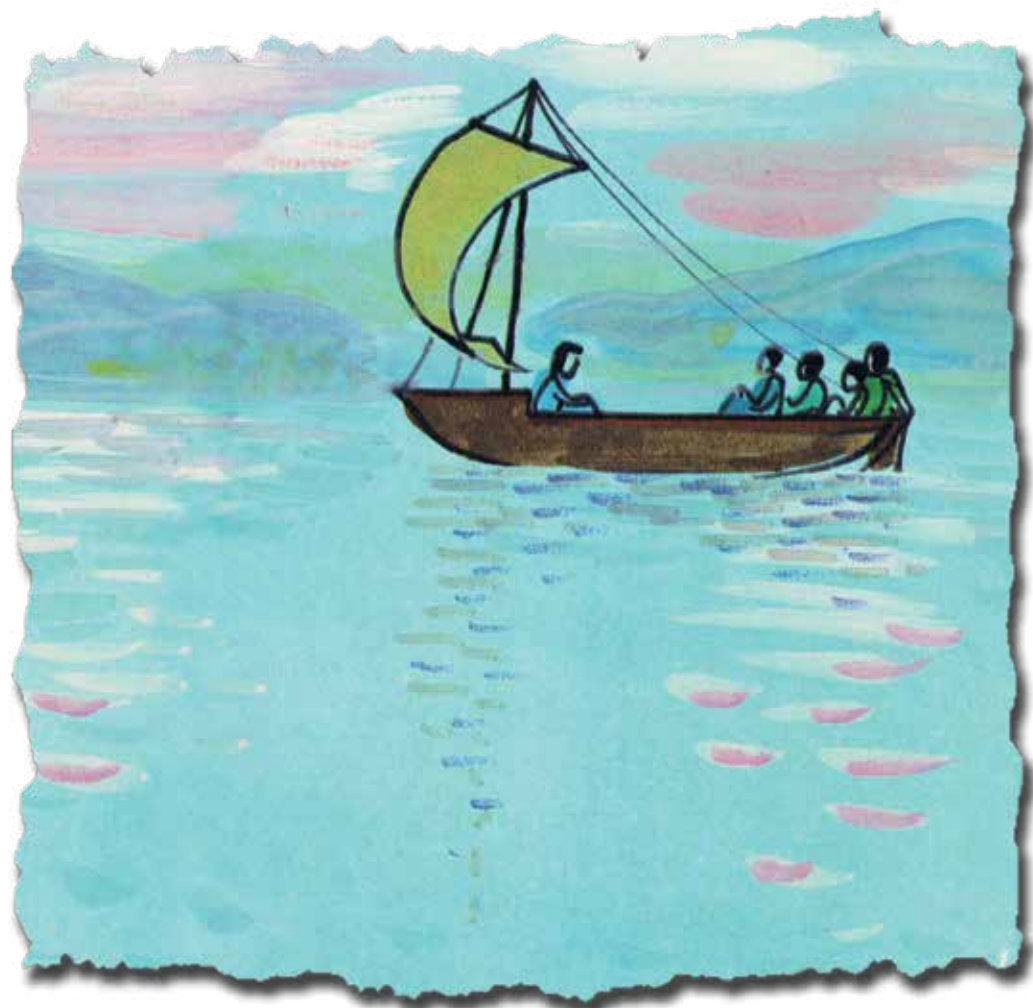
Ndi hone Yesu a tshi vuwa.



Yesu a kaidza dumbu,
magabelo a dzika.

Yesu a ri,

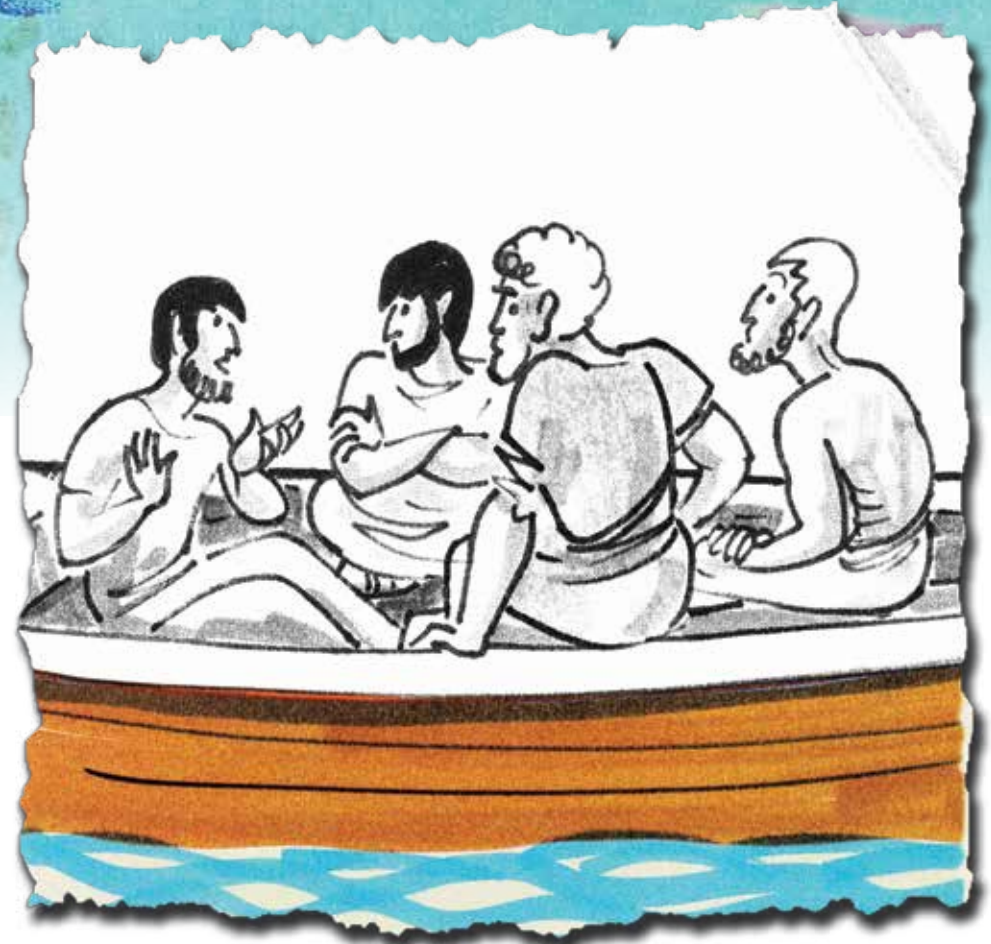
“Ni ri tshete! Dzikani!”



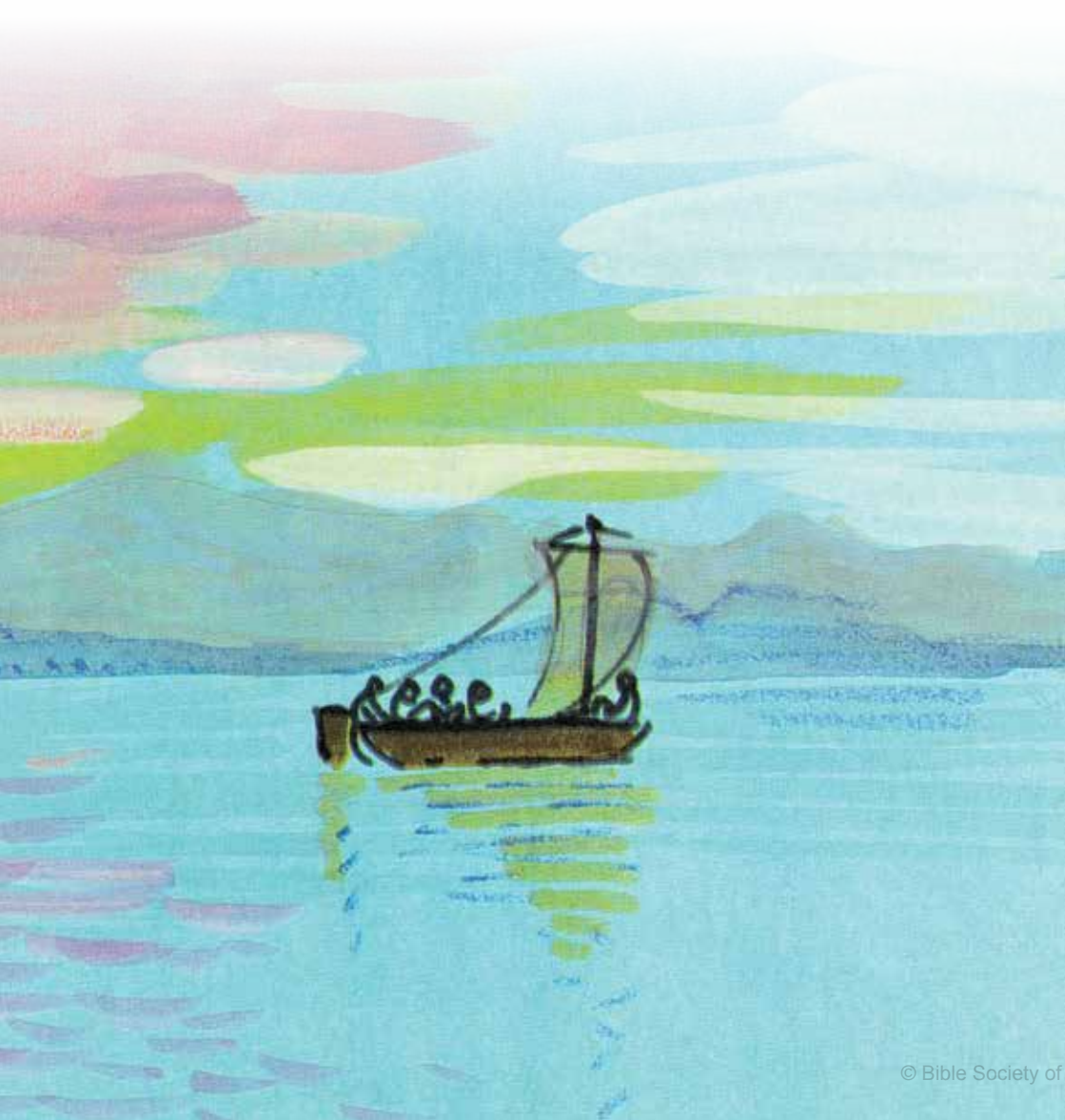
Ha dzika tshoṭhe.

Vhafunziwa vha akhamala,
vha tshenuwa.

Vha vhudzana vha ri,
“Munna uyu ndi muthu-ḽe?
Na maḽumbu na magabelo
a a mu thetshelesa!”



Yesu na vhafunziwa vhawe
vha tala nga tshikepe
vha pfukekanya dzivha.



a **b** Fhedzisanani Maipfi

Dadzani maḽedere a si ho u itela u fhedzisa
nganetsshelo ire afha fhasi.

1. Yesu o ḽamela kha

m u i

2. Vha alavha vha wela

s

3. Yesu o vha a songo vuwa, o vha a kha ḽi

vha o ḽ

4. Ho vha hu na

ḽ m mahulu

5. Mukhumbi wo vha i tshi khou ya u

u i

6. Yesu a ḽea

e

muya na

magabelo uri zwi ime.

7. Maḽumbu a kona u

a

²₃ Wanani Fomula

Ni wana hani phindulo iNwe na inwe ire afha fhasi?

• 8

• 14

• 12

• 6

• 9

• 11

7	+	12	-	9
+	4	÷	5	+
7	×	2	×	4
-	3	×	3	+
6	+	5	÷	6



Zakia

Ho vha hu na
muñwe munna
we a vha a tshi
pfi Zakia.
O vha a tshi dihwa
nga muñwe na
muñwe.





Zakia o vha e munna o pfumaho,
a tshi dzula muḡini wa Jerikho.
Vhathu vho vha vha sa mu funi
nge a vha e muthelisi.

Zakia o vha a tshi kuvhanganya
tshelede i tshi bva kha vhathu.
Tshelede iyo
yo vha i ya vhavhusi.





Muñwe musu Yesu
a swika muḡini wa Jerikho.

Zakia o vha
a tshi ṭoda u vhona
uri Yesu ndi nnyi.





Zakia a gidima
a fhirela gogo,
a gonya muri.

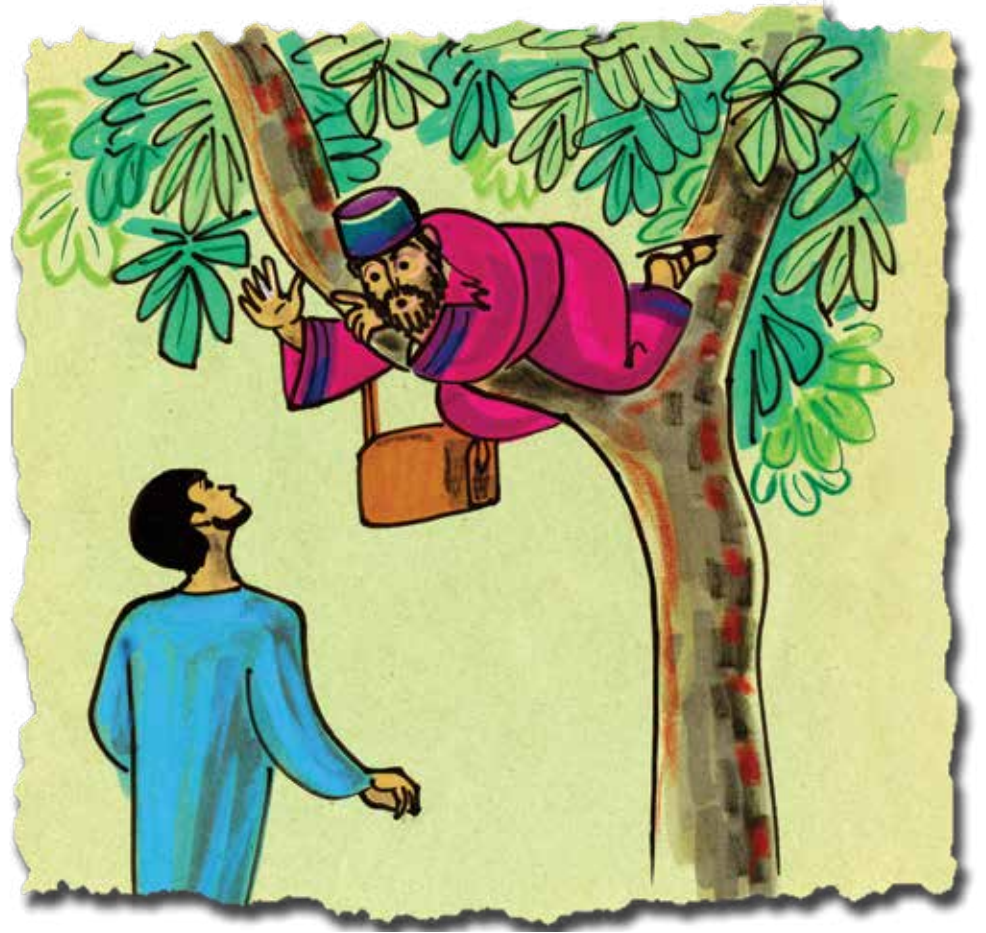
Hone Zakia a si zwi kone
nge a vha e munna mupfufhi.



O gonya uyo muri
uri a kone u vhona Yesu.



Musi Yesu a tshi swika
fhethu afho
a sedza n̄ha.



Yesu a ri,
“Zakia,
ṭavhanyani ni tse.
N̄amusi ndi mueni waṅu.”



Zakia a țavhanya a tsa.

Zakia a țanganedza Yesu
nduni yawe.

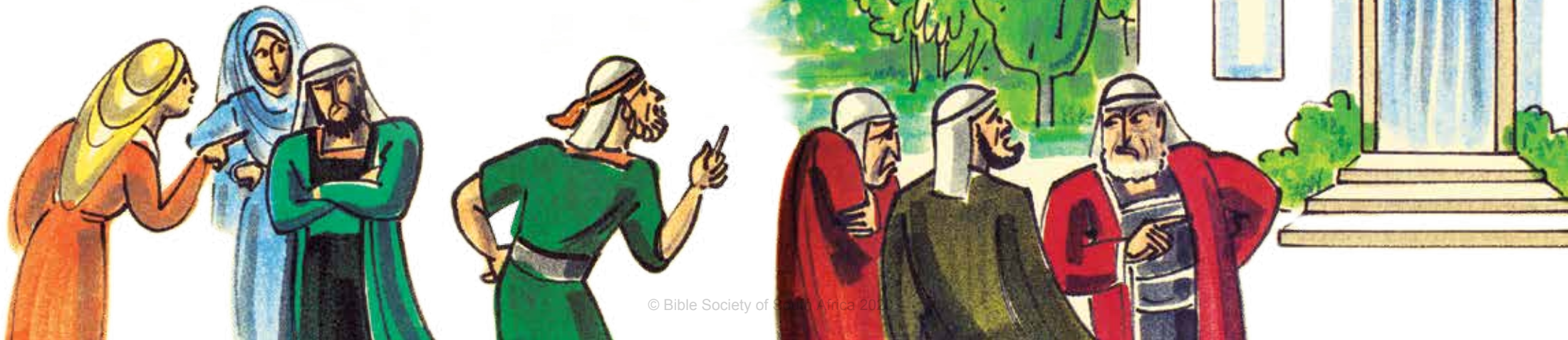


Zakia o vha o takalesa.



Vhathu vhoṭhe
vhe vha zwi vhona
vha thoma u gungula.

Vhathu vha ri,
“Yesu o dalela
munna muvhi!”



Zakia a takuwa
a vhudza Yesu a ri,
“Vhashai ndi do vha ṅea hafu ya
zwoṅhe zwine nda vha nazwo.
Arali ndo fhura muṅwe muthu,
ndi ḍo mu lifhela zwingafho luṅa.”



Yesu a ri,
“ṅamusi fhano muṅani uno
zwo dovha
u vhuelela ngonani.
ṅe ndo ḍa u tshidza
vhathu vho xelaho.”



Zwino Zakia o takala hanil!



^a_b Wanani Vhukhakhi

Wanani tshitengeledzi na vhukhakhi kha maipfi othe a songo peletwa zwone afha fhasi.

m e t h e l i s i

g u n g o l a

g i d i m a

v o t h u

v h o m a

m o r i

n d o n i

x a l a h o



2 3 U vhala Mangwende

Thusani Zakia u vhala mangwende.



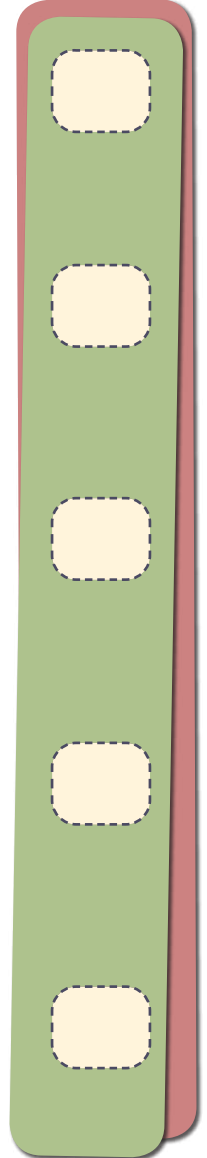
$$1c + 2c + 5c =$$

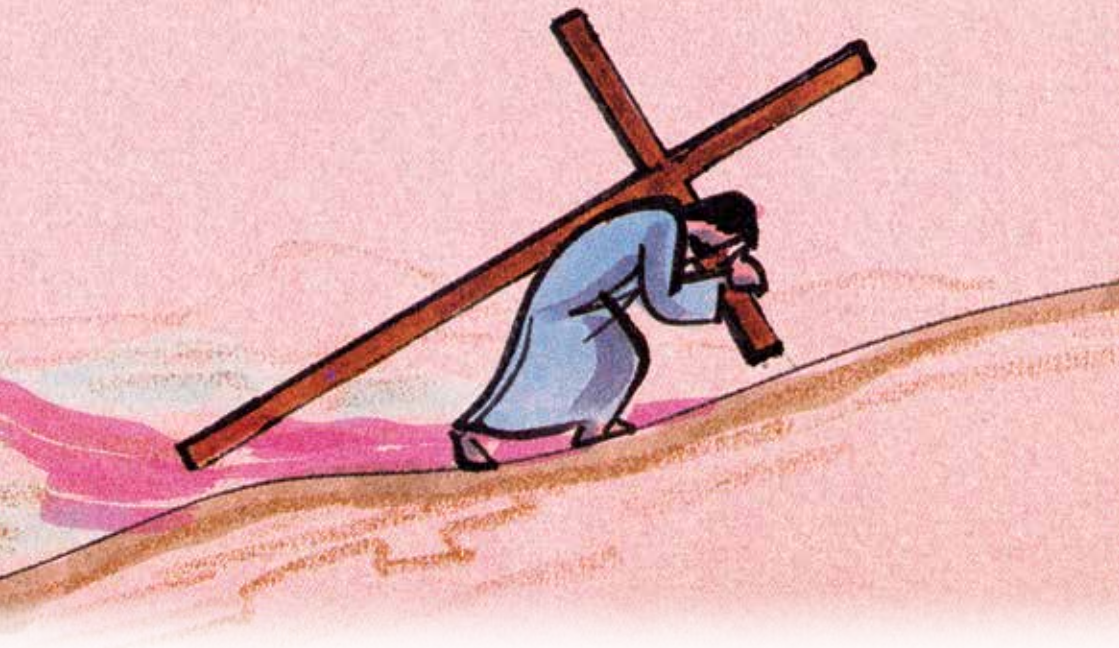
$$2c + 5c + 10c =$$

$$1c + 1c + 5c + 20c =$$

$$2c + 2c + 5c + 10c + 10c =$$

$$1c + 1c + 5c + 10c + 50c =$$





Yesu u a tshila

Yesu na vhafunziwa vhawe
vha ṭuwa vha ya tsimuni.
Yesu a rabela a ri,
“Ita zwine wa funa
nga ṇe.”





Yesu a fhindula a ri,
“Ee, ndi Murwa wa Mudzimu.”

Ndi hone tshifhe muhulu
a tshi vhudzisa
vhanna vha khoro a ri,
“Yesu ndi iteni ngae?”

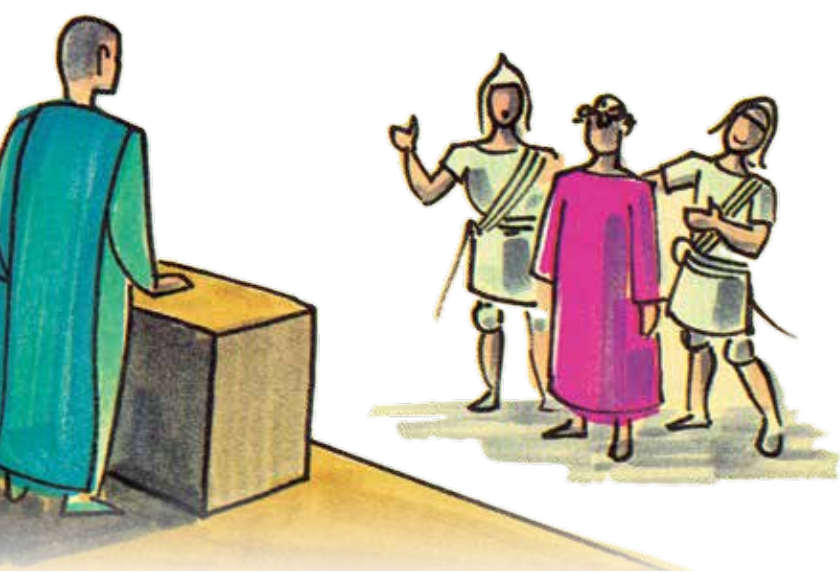
Ndi hone hu tshi ḁa Judasi,
o ranga vhanna phanḁa
vho faraho mapanga na migopi.

Vha ḁa vha fara Yesu.
Vha dzhia Yesu vha mu isa
ha tshifhe muhulu.

Tshifhe muhulu
a vhudzisa Yesu a ri,
“Ni Murwa wa Mudzimu naa?”

Vhone vha fhindula vha ri,
“U fanela u fa.”





Ndi hone vharangaphanda
vha Majuta vha tshi dzhia
Yesu vha mu isa ha Pilato,
uyo a fhedza nga u kumedza Yesu
vhañwe vhahali.



Vhahali vha tamba
nga Yesu,
vha mu ambadza
khare ya mipfa
ṭhohoni.

Vha dzhia Yesu vha mu isa
fhethu hune ha pfi Golgotha.
Golgotha ndi u ri,
“Fhethu ha Dethele”.



Vhahali vha vhamba Yesu
tshifhambanoni.



Maria mme a Yesu
o vha o ima henefho tsini.
O vha o ima tsini ha Johanisi,
khonani ye Yesu a vha a tshi i funa.

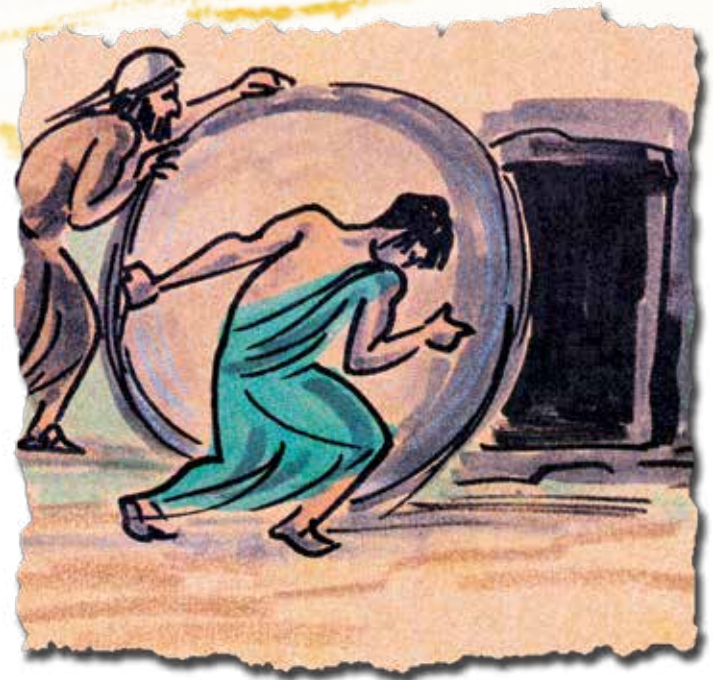
Yesu a vhudza mme awe a ri,
“Johanisi ndi n'wana wavho.”
A amba na khonani yawe a ri,
“Havha ndi mme aṅu.”
Ndi hone Johanisi
a tshi dzhia Maria
a yo dzula nae
hayani hawe.

Yesu a ṭavha mukosi.
Ndi hone a tshi
dzama.





Vha tsisa Yesu
kha tshifhambano.
Ndi hone vha tshi mu
swiṭa tsimuni.



Vha vala tshalo
nga toambo lihulu.

Nga Swondaha nga matsheloni
vhanwe vhasadzi vha ya tshaloni.

Vha vhona tombo

lo kunguluselwa kule.

Hone tshitumbu tsha Yesu
tsho vha tshi siho.

Muruṅwa

we a vha a tshi bva ṭadulu
a vhudza avho vhasadzi a ri,

“Yesu u a tshila!
lyani u vhudza khonani dzawe.”



Musi wonoyo

vhanwe vhanna vhavhili
vho vha vha tshi khou ya
Emausi.

Vho vha vha tshi khou amba
nga zwoṭhe zwo iteaho.

Vho vha vho ṭungufhala
vhukuma.





Yesu a ḡa a tshimbila navho.
Yesu a vha vhudza uri
o vha o fanela u fa.

Ndi hone vha tshi
swika muḡini.



Vhanna avho vha vhudza Yesu vha ri,
“Nga vha dzule na riḡe.”



Yesu a dzhena,
a dzula fhasi uri a le navho.
Musi Yesu a tshi livhuha hu tshi liwa
zwi liwa, vhanna avho vha zwi
divha uri ndi Yesu,
hone Yesu zwenezwo a nyamalala.

Kathihi fhedzi, vhanna avho
vha humela Jerusalema.
Vha vhudza khonani dzavho
zwe zwa itea.
Vha ri vho vhona Yesu.



Avho vhavhili

vho vha vha tshi khou vha vhudza
zwe vha vhona Yesu.

Kathihi fhedzi, Yesu ene muṅe
a ima vhukati havho.

Yesu a vha vhudza a ri,
“Ndi nṅe vhukuma.”



Vha takala nga maanḁa.

Vha ḁivha uri Yesu
u a tshila.

^a_b Tshiwana Khoudu

Ḃedere Ḃinwe na Ḃinwe Ḃi tumana na
nomboro. Ni nga wana khoudu afha fhasi?

22 8 1 6 21 14 26 9 23 1
[] h [] [] [] z [] [] [] []

20 19 8 9 6 8 5
[] [] [] [] [] [] []

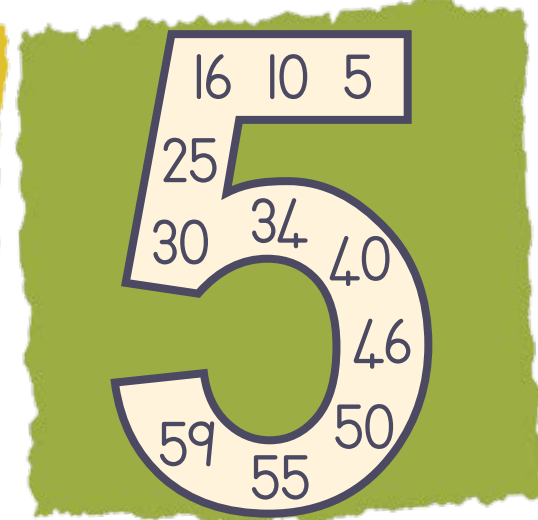
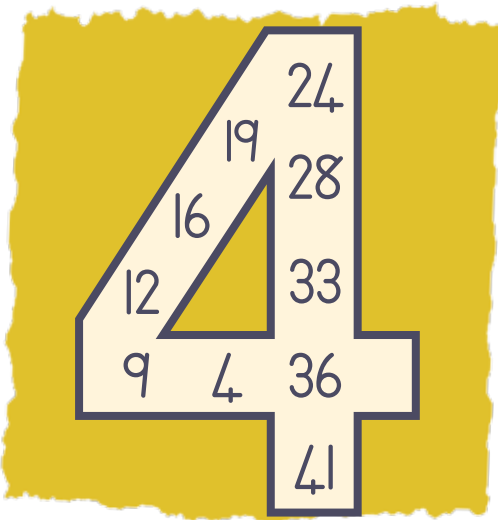
19 23 15 14 4 1 8 1
[] [] [] [] [] [] [] []

13 1 10 21 20 1
[] [] [] [] [] []

a	b	c	d	e	f	g	h	i	j	k	l	m
1	2	3	4	5	6	7	8	9	10	11	12	13
n	o	p	q	r	s	t	u	v	w	x	y	z
14	15	16	17	18	19	20	21	22	23	24	25	26

2 3 Vhukhaki ho Vhalaho

Itani na u tingeledza Nomboro dzine dzi si vhe nyandisa dza nomboro khulwane.



- 1. A si ngoho
- 2. Ndi ngoho
- 3. Ndi ngoho
- 4. Ndi ngoho
- 5. Ndi ngoho
- 6. A si ngoho
- 7. Ndi ngoho
- 8. Ndi ngoho
- 9. A si ngoho

Mutambo wa Ndi ngoho kana A si ngoho:

$$\begin{array}{r}
 7 \\
 2 \\
 2
 \end{array}
 =
 \begin{array}{r}
 2 \\
 2 \\
 1
 \end{array}
 +
 \begin{array}{r}
 7 \\
 2 \\
 1
 \end{array}$$

n s e j
s y n e

z p e i p ũ
z ũ i e p i

Phindulo

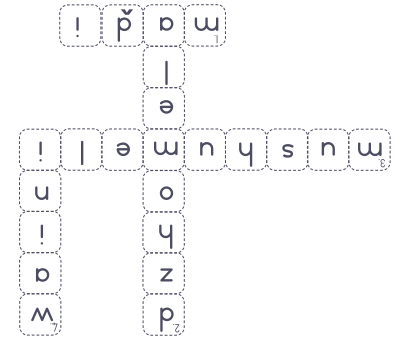
Maipfi Marithwa:

p u n u r n w
u w m u p r u

Giridi ya Nomboro:

7	=	7	+	3
=		=		=
5	=	3	+	2
+		+		+
2	=	1	+	1

Khanganyisa ya khakhisa maipfi:



Phindulo

Wanani Vhukhaki:

muntshelisi | gunguni |

gidima | vatshu | vhoona |

muriri | unjuni | xelaha |

Uvhalo Mangwende:

$$1c + 2c + 5c = 8c$$

$$2c + 5c + 10c = 17c$$

$$3c + 5c + 20c = 28c$$

$$7c + 10c + 20c = 37c$$

$$2c + 5c + 10c + 50c = 67c$$

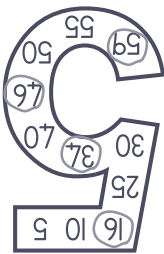
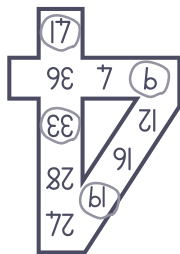
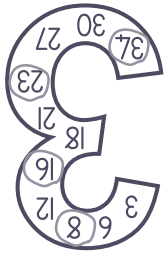
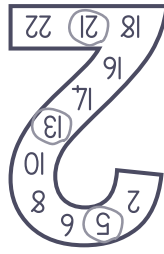
Tshiwana Khoundu:

vhaafunzawa | tshifhe |

swondapha |

majunta |

Vhukhaki ho Vhaloho:



Phindulo

Wanani maipfi:

e	m	u	s	a	m	a	r	i	a	
z	n	g	w	m	u	d	u	m	o	r
w	a	v	e	m	e	n	b	b	t	o
!	d	o	n	g	!	a	h	z		
a	m	a	v	u	d	e	d	m	u	w
m	u	f	u	n	z	!	a	e	s	!
b	w	u	n	g	!	u	s	y	o	a
a	!	s	!	d	m	u	s	e	a	f
r	e	n	u	n	z	!	a	s	r	a
o	r	!	m	a	v	e	m	u	o	w
m	a	m	a	n	g	w	e	n	d	e

Muandisi wo
Vanganho:

$$1 \times 2 = 2$$

$$2 \times 3 = 6$$

$$3 \times 1 = 3$$

$$2 \times 4 = 8$$

$$5 \times 2 = 10$$

$$3 \times 3 = 9$$

$$2 \times 6 = 12$$

$$3 \times 4 = 12$$

Fhedzisanani Maipfi:

1. mukhumbi

2. isha

3. eðela

4. maðumbu

5. nuvhela

6. ndaela

7. dzika

Wanani Fomija:

7	+	12	-	9
7	+	7	÷	5
7	×	2	×	7
+	3	×	3	+
6	÷	5	+	6

Thebuḽu dza Muandiso (1-10)

1x	2x	3x	4x	5x
$1 \times 1 = 1$	$2 \times 1 = 2$	$3 \times 1 = 3$	$4 \times 1 = 4$	$5 \times 1 = 5$
$1 \times 2 = 2$	$2 \times 2 = 4$	$3 \times 2 = 6$	$4 \times 2 = 8$	$5 \times 2 = 10$
$1 \times 3 = 3$	$2 \times 3 = 6$	$3 \times 3 = 9$	$4 \times 3 = 12$	$5 \times 3 = 15$
$1 \times 4 = 4$	$2 \times 4 = 8$	$3 \times 4 = 12$	$4 \times 4 = 16$	$5 \times 4 = 20$
$1 \times 5 = 5$	$2 \times 5 = 10$	$3 \times 5 = 15$	$4 \times 5 = 20$	$5 \times 5 = 25$
$1 \times 6 = 6$	$2 \times 6 = 12$	$3 \times 6 = 18$	$4 \times 6 = 24$	$5 \times 6 = 30$
$1 \times 7 = 7$	$2 \times 7 = 14$	$3 \times 7 = 21$	$4 \times 7 = 28$	$5 \times 7 = 35$
$1 \times 8 = 8$	$2 \times 8 = 16$	$3 \times 8 = 24$	$4 \times 8 = 32$	$5 \times 8 = 40$
$1 \times 9 = 9$	$2 \times 9 = 18$	$3 \times 9 = 27$	$4 \times 9 = 36$	$5 \times 9 = 45$
$1 \times 10 = 10$	$2 \times 10 = 20$	$3 \times 10 = 30$	$4 \times 10 = 40$	$5 \times 10 = 50$
6x	7x	8x	9x	10x
$6 \times 1 = 6$	$7 \times 1 = 7$	$8 \times 1 = 8$	$9 \times 1 = 9$	$10 \times 1 = 10$
$6 \times 2 = 12$	$7 \times 2 = 14$	$8 \times 2 = 16$	$9 \times 2 = 18$	$10 \times 2 = 20$
$6 \times 3 = 18$	$7 \times 3 = 21$	$8 \times 3 = 24$	$9 \times 3 = 27$	$10 \times 3 = 30$
$6 \times 4 = 24$	$7 \times 4 = 28$	$8 \times 4 = 32$	$9 \times 4 = 36$	$10 \times 4 = 40$
$6 \times 5 = 30$	$7 \times 5 = 35$	$8 \times 5 = 40$	$9 \times 5 = 45$	$10 \times 5 = 50$
$6 \times 6 = 36$	$7 \times 6 = 42$	$8 \times 6 = 48$	$9 \times 6 = 54$	$10 \times 6 = 60$
$6 \times 7 = 42$	$7 \times 7 = 49$	$8 \times 7 = 56$	$9 \times 7 = 63$	$10 \times 7 = 70$
$6 \times 8 = 48$	$7 \times 8 = 56$	$8 \times 8 = 64$	$9 \times 8 = 72$	$10 \times 8 = 80$
$6 \times 9 = 54$	$7 \times 9 = 63$	$8 \times 9 = 72$	$9 \times 9 = 81$	$10 \times 9 = 90$
$6 \times 10 = 60$	$7 \times 10 = 70$	$8 \times 10 = 80$	$9 \times 10 = 90$	$10 \times 10 = 100$